

## Patient outcomes

	✓	N	Result
Date ready for care to episode start			
Day of/day after	3912	4117	95.0%
Time in unstable phase			
Three days or less	1000	1084	92.3%

## Symptoms & problems

### Anticipatory Care

Pain PCPSS	5006	5441	92.0%
Pain SAS	4653	5097	91.3%
Fatigue	4973	5312	93.6%
Breathing problems	5606	5821	96.3%
Family/carer	3469	3735	92.9%

### Responsive Care

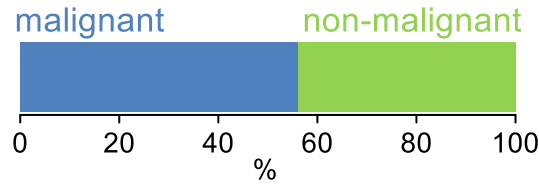
Pain PCPSS	825	1204	68.5%
Pain SAS	881	1443	61.1%
Fatigue	727	1224	59.4%
Breathing problems	411	720	57.1%
Family/carer	404	683	59.2%

## Casemix adjusted outcomes

Pain PCPSS	6645	0.15
Other symptoms	6190	0.28
Family/carer	4418	0.23
Psychological/spiritual	6608	0.25
Pain SAS	6540	0.38
Nausea	6543	0.22
Breathing problems	6541	0.35
Bowel problems	6531	0.32

✓ = Positive outcomes    N = Total outcomes

## Diagnosis

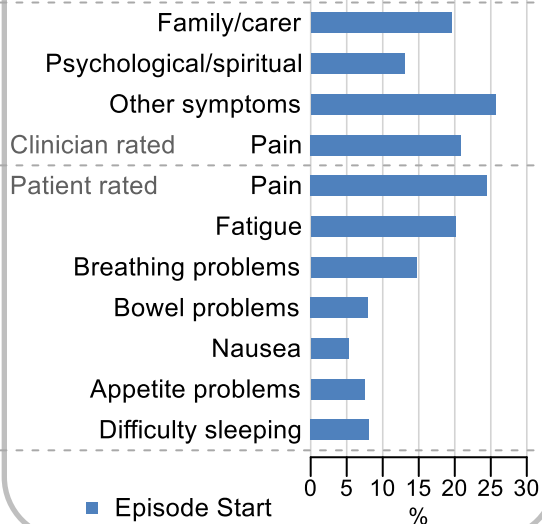


## Age at episode start

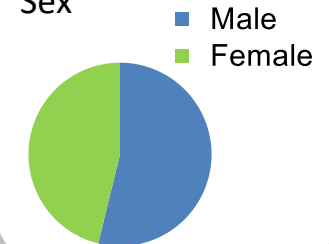
Mean: **75.1**  
Median: **77.0**

## Symptoms & problems

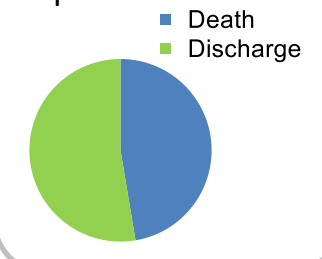
proportion of moderate / severe scores



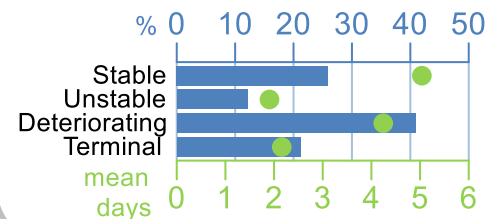
## Sex



## Episode end



## Phase % and mean length in days

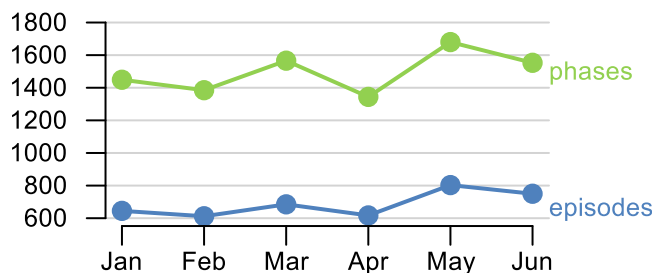


## Phases per episode

**2.1**

## Volume of data

Patients: **3,593**  
Episodes: **4,203**  
Phases: **8,977**



## Episode length in days

Mean: **8.2**  
Median: **4.0**

