

Patient outcomes

	✓	N	Result
Date ready for care to episode start			
Day of/day after	3919	4111	95.3%
Time in unstable phase			
Three days or less	424	508	83.5%

Symptoms & problems

Anticipatory Care

Pain PCPSS	7127	8227	86.6%
Pain SAS	7097	8150	87.1%
Fatigue	6018	7178	83.8%
Breathing problems	8227	8725	94.3%
Family/carer	6029	7089	85.0%

Responsive Care

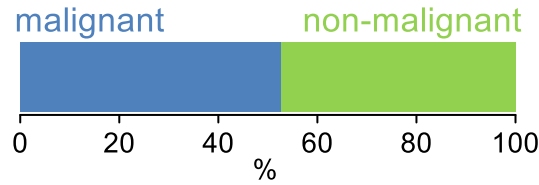
Pain PCPSS	971	1440	67.4%
Pain SAS	946	1474	64.2%
Fatigue	1239	2424	51.1%
Breathing problems	493	886	55.6%
Family/carer	825	1321	62.5%

Casemix adjusted outcomes

Pain PCPSS	9667	0.03
Other symptoms	9199	0.08
Family/carer	8410	0.10
Psychological/spiritual	9645	0.07
Pain SAS	9624	0.16
Nausea	9605	0.11
Breathing problems	9611	0.21
Bowel problems	9594	0.16

✓ = Positive outcomes N = Total outcomes

Diagnosis

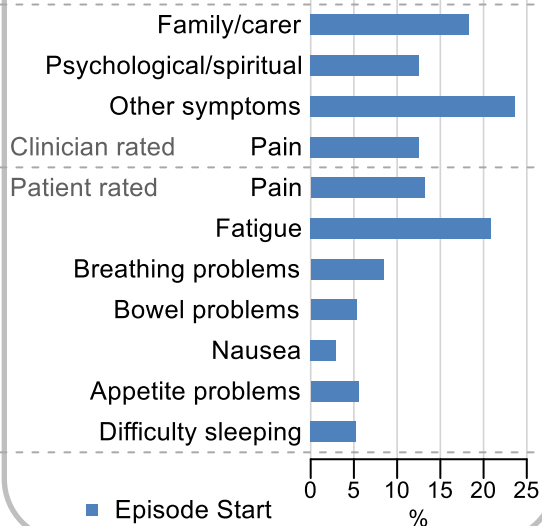


Age at episode start

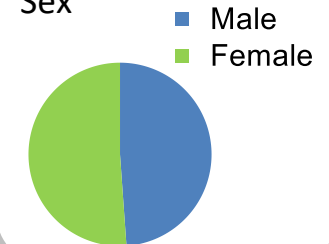
Mean: **80.7**
Median: **83.0**

Symptoms & problems

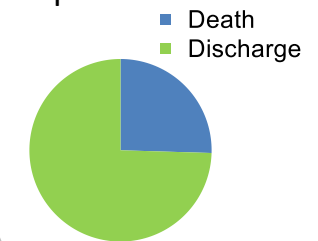
proportion of moderate / severe scores



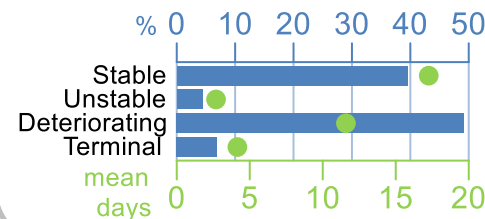
Sex



Episode end



Phase % and mean length in days

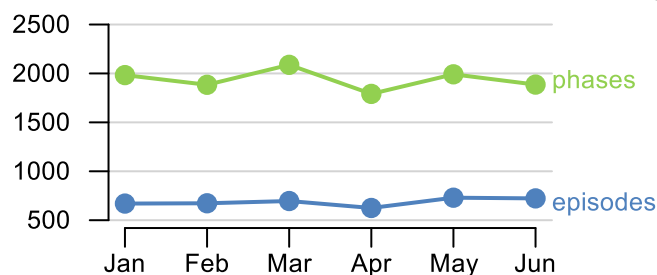


Phases per episode

2.2

Volume of data

Patients: **3,860**
Episodes: **4,708**
Phases: **11,623**



Episode length in days

Mean: **32.1**
Median: **23.0**

